

INME SUMMER CAMPS

DISCOVER PROGRAM SCHEDULE 2019



DISCOVER PROGRAMS

These programs are designed for first time campers (typically 9-11 year olds) to encourage them to step out of their comfort zone and explore the world of adventure and nature.

- Multi-activity program
- Campus Chief and a team of trained outdoor instructors run the program
- Extra supervision & care (including lady course leaders) to handle first timers
- A doctor with basic medical facilities is always present on the campus
- Accommodation in tents or dormitories, dining facilities, and fixed toilets and baths



| CODE | AGE | DEPARTURE | ARRIVAL |
|-------------|-----------|-----------|----------|
| Y2 D | 09-11 yrs | 17 April | 22 April |

ACTIVITIES

All programs are Multi activity programs.
ROCK CLIMBING, ROPES COURSE, WILDERNESS CRAFT, BACKPACKING

DEPARTURE: 6:00 am (report by 5:15 am)

ARRIVAL: 10:30 pm

Army Public School, Kamaraj Road, Bangalore.

By luxury AC buses.

TOUR PACKAGE COST

Rs. 34900



| CODE | AGE | DEPARTURE | ARRIVAL |
|-------------|-----------|-----------|---------|
| B1 D | 09-11 yrs | 08 May | 13 May |
| B3 D | 09-11 yrs | 04 June | 09 June |

ACTIVITIES

All programs are Multi activity programs.
ROCK CLIMBING, ROPES COURSE, WILDERNESS CRAFT, BACKPACKING

DEPARTURE: 6:00 am (report by 5:15 am)

ARRIVAL: 9:30 pm

Don Bosco Church, near Bosco School, Matunga,

Mumbai. By luxury AC buses.

TOUR PACKAGE COST

Rs. 34900



| CODE | AGE | DEPARTURE | ARRIVAL |
|-------------|-----------|-----------|---------|
| U1 D | 09-11 yrs | 13 May | 18 May |
| U2 D | 10-12 yrs | 19 May | 24 May |
| U3 D | 09-11 yrs | 25 May | 30 May |
| U4 D | 09-11 yrs | 31 May | 05 June |

ACTIVITIES

All programs are Multi activity programs.
ROCK CLIMBING, ROPES COURSE, WILDERNESS CRAFT, BACKPACKING

DEPARTURE: 6:00 am (report by 5:00 am)

ARRIVAL: 9:05 pm

Premium car parking, New Delhi Railway Station

(Ajmeri Gate side). By AC Chair car on Kathgodam

Shatabdi. Onward to campus by non-AC bus/jeep.

TOUR PACKAGE COST

Rs. 34900

PAYMENTS / CANCELLATIONS / OUTSTATION ASSISTANCE

PAYMENTS

WEBSITE Payments on the inme website (www.inme.in) are subject to a 2% non refundable convenience fee.

CHEQUES In favour of INME LEARNING PVT. LTD.

CASH Accepted only at our offices.

NETBANKING Inme Learning Pvt. Ltd.
HDFC Bank, DLF City Court Branch
A/C no. 00322320002696, IFSC Code HDFC0001719

Once you transfer/deposit money into inme account, you need to email the transaction details to us at info@inme.in (with participant name, city and program code).

Once you transfer/deposit money into inme account, you need to email the transaction details to us at info@inme.in (with participant name, city and program code).

Once you transfer/deposit money into inme account, you need to email the transaction details to us at info@inme.in (with participant name, city and program code).

Once you transfer/deposit money into inme account, you need to email the transaction details to us at info@inme.in (with participant name, city and program code).

Once you transfer/deposit money into inme account, you need to email the transaction details to us at info@inme.in (with participant name, city and program code).

Once you transfer/deposit money into inme account, you need to email the transaction details to us at info@inme.in (with participant name, city and program code).

Once you transfer/deposit money into inme account, you need to email the transaction details to us at info@inme.in (with participant name, city and program code).

Once you transfer/deposit money into inme account, you need to email the transaction details to us at info@inme.in (with participant name, city and program code).

Once you transfer/deposit money into inme account, you need to email the transaction details to us at info@inme.in (with participant name, city and program code).

Once you transfer/deposit money into inme account, you need to email the transaction details to us at info@inme.in (with participant name, city and program code).

Once you transfer/deposit money into inme account, you need to email the transaction details to us at info@inme.in (with participant name, city and program code).

Once you transfer/deposit money into inme account, you need to email the transaction details to us at info@inme.in (with participant name, city and program code).

Once you transfer/deposit money into inme account, you need to email the transaction details to us at info@inme.in (with participant name, city and program code).

Once you transfer/deposit money into inme account, you need to email the transaction details to us at info@inme.in (with participant name, city and program code).

Once you transfer/deposit money into inme account, you need to email the transaction details to us at info@inme.in (with participant name, city and program code).

Once you transfer/deposit money into inme account, you need to email the transaction details to us at info@inme.in (with participant name, city and program code).

Once you transfer/deposit money into inme account, you need to email the transaction details to us at info@inme.in (with participant name, city and program code).

Once you transfer/deposit money into inme account, you need to email the transaction details to us at info@inme.in (with participant name, city and program code).

Once you transfer/deposit money into inme account, you need to email the transaction details to us at info@inme.in (with participant name, city and program code).

Once you transfer/deposit money into inme account, you need to email the transaction details to us at info@inme.in (with participant name, city and program code).

Once you transfer/deposit money into inme account, you need to email the transaction details to us at info@inme.in (with participant name, city and program code).

Once you transfer/deposit money into inme account, you need to email the transaction details to us at info@inme.in (with participant name, city and program code).

Once you transfer/deposit money into inme account, you need to email the transaction details to us at info@inme.in (with participant name, city and program code).

Once you transfer/deposit money into inme account, you need to email the transaction details to us at info@inme.in (with participant name, city and program code).

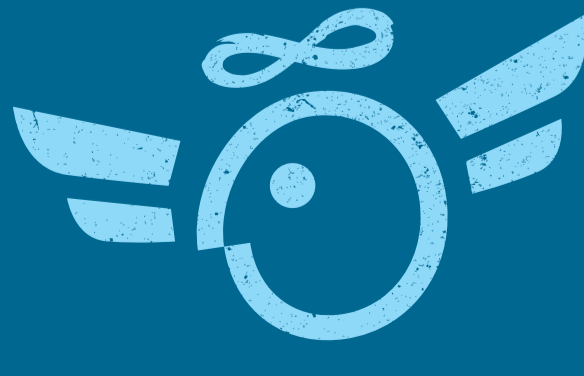
Once you transfer/deposit money into inme account, you need to email the transaction details to us at info@inme.in (with participant name, city and program code).

Once you transfer/deposit money into inme account, you need to email the transaction details to us at info@inme.in (with participant name, city and program code).

Once you transfer/deposit money into inme account, you need to email the transaction details to us at info@inme.in (with participant name, city and program code).

Once you transfer/deposit money into inme account, you need to email the transaction details to us at info@inme.in (with participant name, city and program code).

Once you transfer/deposit money into inme account, you need to email the transaction details to us at info@inme.in (with participant name, city and program code).



 [inme.in](https://www.instagram.com/inme.in)

 [facebook.com/inme.in](https://www.facebook.com/inme.in)

NCR
(0124) 401 4663

BANGALORE
(080) 4155 4663

MUMBAI
99200 64414

KOLKATA
83370 03193